



AMERICAN  
SPEECH-LANGUAGE-  
HEARING  
ASSOCIATION

# **Speech-Language Pathologists— Who Are We, and What Do We Do?**

A Presentation for Administrators,  
Teachers, and Other School  
Personnel

# What's up with that title? CCC-SLP

- SLP = speech-language pathologist
- CCC = Certificate of Clinical Competence
  - ◆ Earning a master's or doctorate degree from an accredited university
  - ◆ Passing a national exam
  - ◆ Completing a 1-year, supervised clinical fellowship.
- Many states require SLPs to have state licenses to practice.
- An SLP must complete a certain number of continuing education units(CEUs) each year to maintain the CCC.



# What is a *communication disorder*?

- An impairment in the ability to receive, send, process, and comprehend concepts or verbal, nonverbal, and graphic symbol systems.
- It may affect one's ability to speak, read, write, process information, interact socially, and so forth.



# What do SLPs do?

---

Provide services for:

- Speech production
- Language
- Cognition
- Feeding and swallowing
- Fluency
- Voice
- Resonance
- Auditory habilitation/rehabilitation



# What is a *speech disorder*?

- ◆ An impairment of articulation of speech sounds, fluency, or voice



# What is a *speech sound/articulation disorder*?

---

An atypical production of speech sounds characterized by

- ◆ Substitutions (*tool/cool, wash/watch*)
- ◆ Omissions (*sip/slip, boo/book*)
- ◆ Additions or distortions (lisps, *wabbit/rabbit*)

This disorder may interfere with intelligibility.

Significant speech sound disorders impact a child's self-esteem, peer relationships, and ability to read, spell, and write accurately.



# What is a *language disorder*?

---

- A *language disorder* is impaired **comprehension** and/or **use** of spoken, written, and/or other symbol systems.
- The disorder may involve, in any combination,
  - ◆ the **form** of language (phonology, morphology, syntax);
  - ◆ the **content** of language (semantics); and/or
  - ◆ the **function** of language in communication (pragmatics).



# What are the different types of language disorders?

- Phonology
- Morphology
- Syntax
- Semantics
- Pragmatics/Social Language





# What are *cognitive disorders*?

---

*Cognitive disorders* refers to difficulties with

- attention;
- memory;
- problem solving; and/or
- executive functioning.

These symptoms may be the result of a traumatic brain injury (TBI) due to concussions and other head injuries.



# What are *feeding and swallowing disorders*?

---

- A *feeding disorder* includes difficulty getting food to the mouth, food selectivity, refusal, and/or difficulty with food textures or colors.
- A *swallowing disorder* is difficulty managing foods/liquids once they are in the mouth.
- Risks include malnutrition, dehydration, choking, and aspiration pneumonia.
- This disorder is educationally relevant because children must be kept safe when eating and drinking in school.



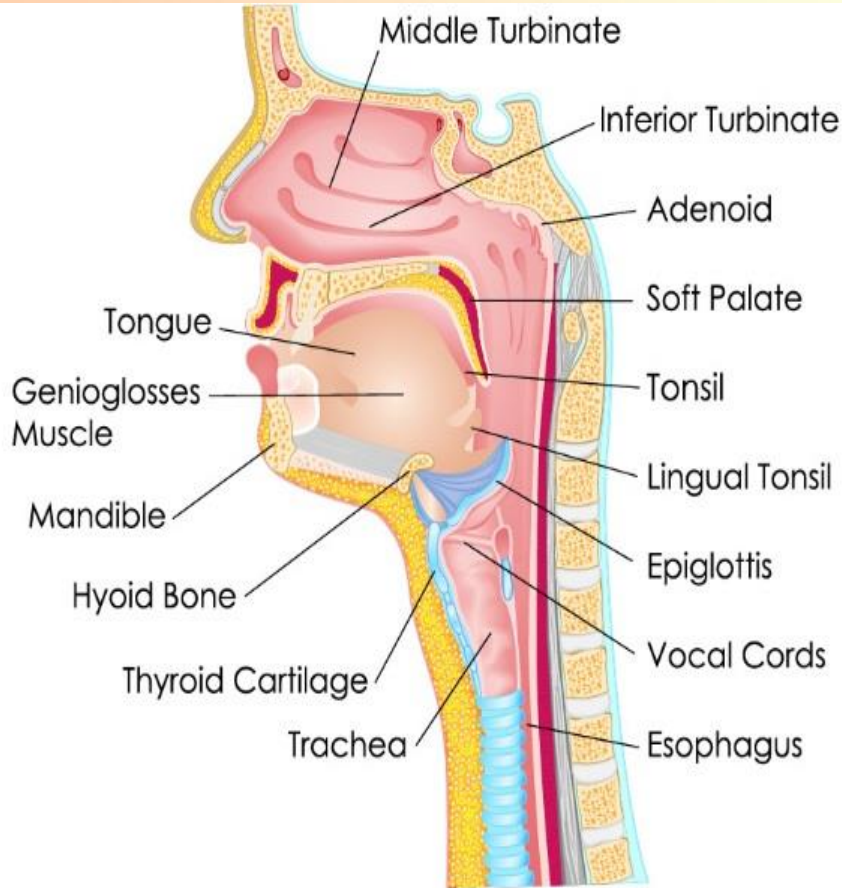
# What is a *fluency disorder*?

---

- An interruption in the flow of speaking characterized by atypical rate, rhythm, and repetitions in sounds, syllables, words, and phrases.
- Prolonging, repeating, or blocking on sounds or words are typical signs of stuttering.



# What is a *voice disorder*?

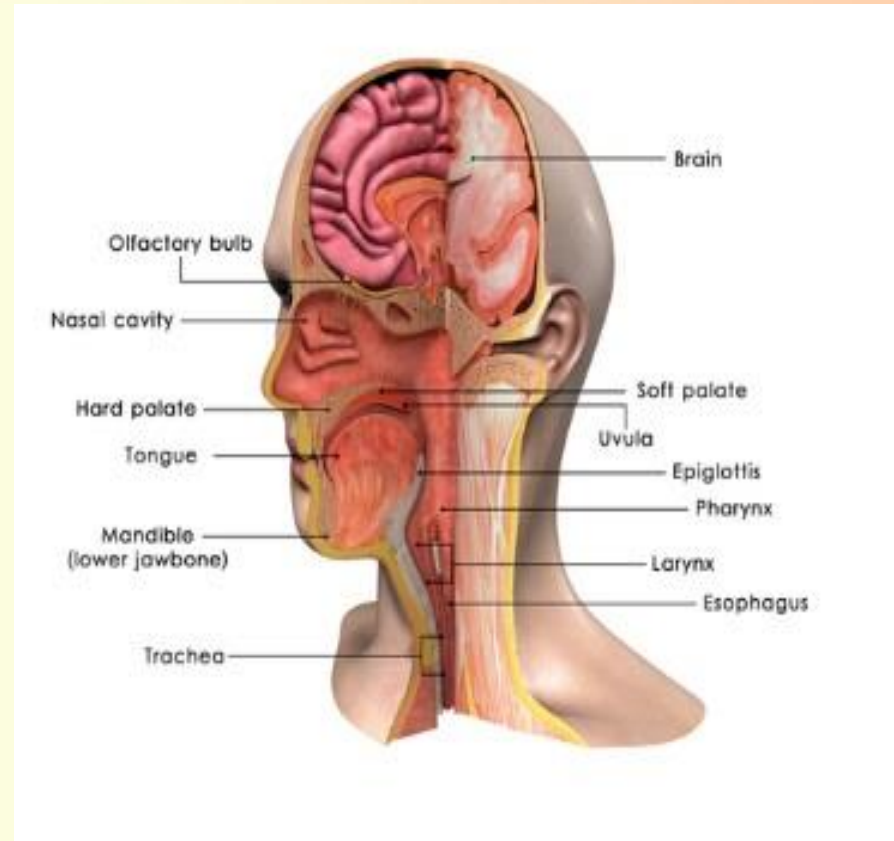


- Abnormal production and/or absences of vocal quality, pitch, loudness, resonance, and/or duration, which is inappropriate for an individual's age and/or sex gender .
- Voice may sound hoarse, raspy, too soft, high pitched, or choppy.

# What are *resonance disorders*?

Difficulties with:

- Hypernasality
- Hyponasality
- Cul-de-sac resonance
- Forward focus



# What is *auditory habilitation/rehabilitation*?

- Speech, language, communication, and listening skills that are affected by hearing loss, deafness
- Types of auditory processing disorders are not related to hearing loss



# What is Telepractice?

---

*Telepractice* is the application of telecommunications technology to the delivery of speech-language pathology and audiology professional services at a distance by linking clinician to student/client/patient for assessment, intervention, and/or consultation.



# Where do SLPs provide services?

- Classrooms
- Lunchrooms, playgrounds, media centers
- Communities
- Job training sites
- Homes
- Preschools
- Therapy rooms
- Clinical settings/private practices/hospitals





# What do SLPS do?

---

- Conduct screenings and diagnostic evaluations
- Work with children who have a wide range of mild to severe disabilities
- Provide services on an individual, small-group, or classroom basis to infants, toddlers, preschoolers, school-age children, and adolescents
- Work on listening, speaking, reading, writing, and learning strategies in general education and special education settings



# What others things do SLPs do?

---

- Analyze what may be contributing to students' difficulty mastering various aspects of the curriculum and state standards
- Work within the context of MTSS/RTI to provide materials, strategies, data collection and analysis, and short-term interventions
- Provide training on communication-related topics



# What more do SLPs do?

---

- Develop individualized family service plans (IFSPs) and individualized education programs (IEPs)
- Complete documentation as required by federal, state, and local agencies
- Provide counseling and education to families
- Serve as consultants to other educators and related professionals
- Supervise support personnel in public schools
- Supervise clinical practica and clinical fellowships



# What do SLPs do to support literacy?

---

- ◆ Teach language underpinnings of literacy, including
  - Vocabulary
  - Grammar
  - Phonology
  - Idiomatic concepts
  - Sequencing
  - Categorizing
  - Summarizing
  - Social language skills



# How do SLPs assist teachers?

---

- Coaching teachers to facilitate improved communication
- Developing modifications and accommodations
- Setting expectations for students
- Establishing reinforcement and motivation strategies
- Collecting and analyzing student data
- Providing resources to supplement instruction



# How do SLPs support college and career readiness?

- SLPs support college and career readiness in these ways:
  - ◆ SLPs are great partners and useful resources who can serve on a variety of teams (concussion management, professional learning community, curriculum teams, etc.).
  - ◆ SLPs are teaching speech and language skills that are foundational to literacy, behavioral, and academic success for students with IEPs and for at-risk students (e.g., MTSS).
  - ◆ SLPs can provide staff training on many topics.



# Why should teachers consider making the SLP their new best friend?

---

- There is emerging evidence that collaborating to provide speech and language services within the classroom shows greater improvement in academic and social functioning.
- All students may benefit from the SLP's work in the classroom.
- Students with behavioral problems often have an underlying language weakness or disorder.
- A causal element of literacy problems may be weak or disordered language skills.



# We are better together !

---

SLPs look forward to partnering with you to improve student outcomes and contribute to students' college and career readiness!



AMERICAN  
SPEECH-LANGUAGE-  
HEARING  
ASSOCIATION



# Questions/Comments/Invitations

